

product specifications



POINT SERIES

15

- 2-WAY CABINET
- 40°x 20°, 60°x 40° or 90°x 60° ROTATABLE WAVEGUIDE
- AVAILABLE IN ACTIVE AND PASSIVE VERSIONS
- NEO-KEVLAR LMF DRIVER
- AVAILABLE IN 1,114 CUSTOM PANTONE COLORS
- ANISOMETRIC HEXAGON SHAPE FOR EASY MONITOR MODE USE
- SLR™ RIGGING SYSTEM FACILITATES EVEN THE MOST COMPLEX INSTALLATIONS.



Designed for optimal ease-of-use, Adamson's first contractor dedicated line the 'Point Series', encapsulate all that Adamson's touring systems are known for: High horsepower systems with all the subtleties. For the first time Adamson's Neo-Kevlar driver technology with Adamson's Advanced Cone Architecture™ is available for the contractor market. Our goal was to design a system that has class-leading fidelity and power, but also refined esthetics.

The Point Series™ offers a unique profile, grill and trim. The series is available in the entire range of Pantone Color systems, giving 1,114 available colors for both the loudspeakers and the rigging accessories, making color-matching the speaker system to any room a breeze. All metal parts are powdercoated for extra durability, and the authentic birch cabinets are speckle coated for a unique looking industrial finish, not to be confused with cheaper sounding moulded plastic or fiberglass 'equivalents' offered in the marketplace.

The Adamson Point Series includes 5 models. Three 2-way enclosures and two subwoofer cabinets.

The Point 15 is the largest cabinet of the Point Series range. It bridges the gap between high power and high fidelity. The Point 15 should be the choice where high SPL and strong low mid power are a must. The Point 15 will be right at home with live bands of all genres, DJs and high level replay systems.

The Point 15 is available in passive and active versions. This 15" Neo-Kevlar driver is identical to the driver used in the popular M15 and M215 - Adamson's M Series of stagemonitors and drumfill enclosures. The ND15L is powerful enough to provide monitoring for performers at a 100,000 person outdoor rock show, it can without a doubt keep up with everything one might need to do in most indoor venues, be it as the main system or as a fill box in large sized venues. The Adamson ND15L (6Ω) Neodymium Kevlar driver and the 1.4" exit (16Ω) HF driver mounted on an Adamson fiberglass waveguide, give this powerful cabinet the coherency and musicality that is unparalleled. The Point 15's rotatable waveguide, available in 3 different options 40°x 20°, 60°x 40° or 90°x 60°, offer a defined, yet flexible coverage pattern. The hexagon shape makes this 15" enclosure an economical choice for stage-monitoring needs, without any additional adjustments. EASE data is available for all Point Series enclosures.

Product Code 900095

technical specifications

POINT SERIES

15



RIGGING FEATURES

The Side Lock Revolver (SLR™) rigging system promotes flexibility in setup even in the most Dali-esque venues with difficult coverage areas. All cabinets use discreet SLR™ sockets placed on 4 sides of the enclosure, available for use with all Point series rigging methods offered. The Point 15's can be hung side by side using the SLR™ Butterfly Brackets™ and SLR™ Super Sight Mount™, or in a single or double vertical pair configuration, using the SLR Articulator™. Both systems allow full individual box rotation for vertical angle control with a pull of the Quick-lock™ pin, and horizontal angle control with a single manually adjustable knob (special-order only) or a Phillips head screw.

Built-in Rigging Features:

2 Sets of SLR™ Sockets, Built-in Polemount Socket, 4 x 5/16 -18 threads for Omni Mount 60 Series

Optional Rigging Parts:

SLR™ Quick-Lock™ Components:

Vertical & Horizontal Bracket™, Butterfly Bracket™, Articulator™

SLR™ Components:

Sight Mount Bracket™, Extended Sight Mount Bracket™, Super Sight Mount Bracket™

SLR™ Polemount Components:

Polemount Base™ for Quick-Lock™ Horizontal Brackets™

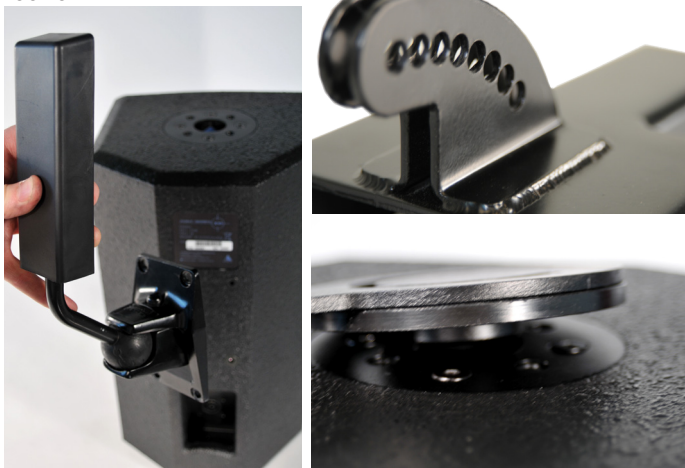
SLR™ C-Clamp Components:

Quick-Lock™ 360° Articulator™, Fixed Base™

SLR™ Underhang Components:

Use 2 x Vertical Brackets™ or 2 x Butterfly Brackets™ with an Articulator™ for a 2 or 4-box Array.

*please refer to the Point Series rigging manual for details on all SLR™ rigging systems and parts.



Adamson Systems Engineering
1401 Scugog Line 6, Port Perry, ON L9L 1B2
T: [905] 982 0520 F: [905] 982 0609
www.adamsonproaudio.com
sales@adamsonproaudio.com

PHYSICAL DATA

Dimensions & Weight

Height Front (cm)	28.5/8" (72.6)
Width (cm)	17.3/4" (45.1)
Depth (cm)	13.1/8" (33.4)
Weight (Kg)	54.5 lbs (24.8)
Weight (Kg) with Crossover	58.5 lbs (26.6)
Box Shape	Anisometric Hexagon
Box Finish	Textured Water Borne Acrylic
Hardware Finish	Polyester Sandtex™ Powder
Protective grille	18 Gauge Steel & foam
Horn Configuration	Fiberglass Waveguide
Cabinet Construction	Rugged 11 ply 5/8" Baltic Birch
Options	1,114 Pantone colours

TECHNICAL DATA

Frequency Response (+/-3dB)

Full Range Preset	45Hz - 18kHz
Frequency Range	
with Xover Preset	90Hz - 18kHz
Maximum SPL (Continuous)	
with Xover Preset	TBA
with Full Range Preset	TBA
Maximum SPL (Peak)	
Xover Preset	TBA
Full Range Preset	TBA
Directivity	
Horizontal x Vertical	40°x 20° / 60°x 40° / 90°x 60°
Sensitivity (2.83V @ 1m)	
LF	102.7 dB
HF	108.15 dB
LF & MF Section (Impedance ohms)	15" ND15L Neodymium Kevlar Mid-Bass driver (6Ω)
HF Section (Impedance ohms)	3" B&C DE 800 1.4" exit compression driver (16Ω)
Power Handling (AES / Program / Peak)	
LF	500 / 1000 / 2000
HF	110 / 220 / 440
Connection	2 x Neutrik Speakon™ NL4 connectors
Processor Presets	4 x 8 networkable DSP Point Control

Specifications are subject to change without notice.